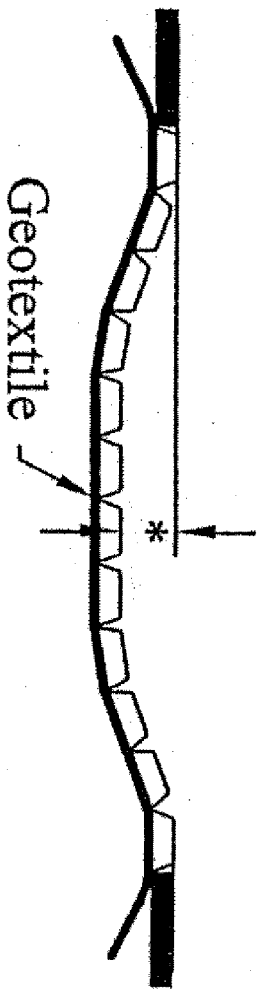
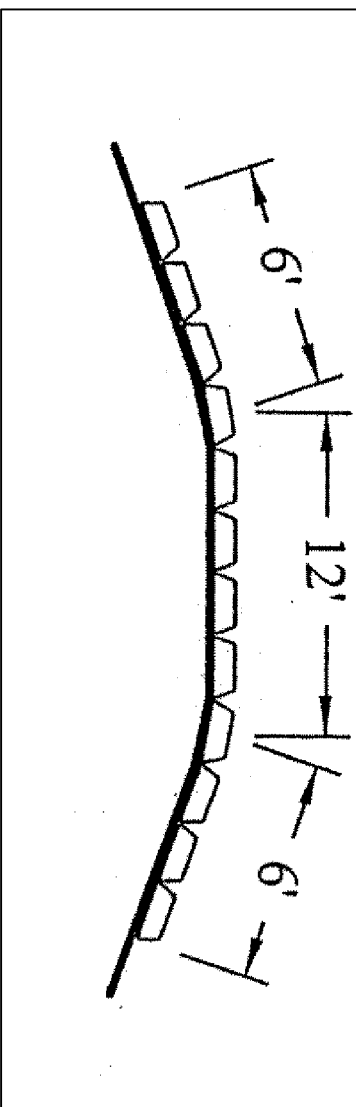


Mats set flush with surrounding soil



**CROSS-SECTION DETAIL**

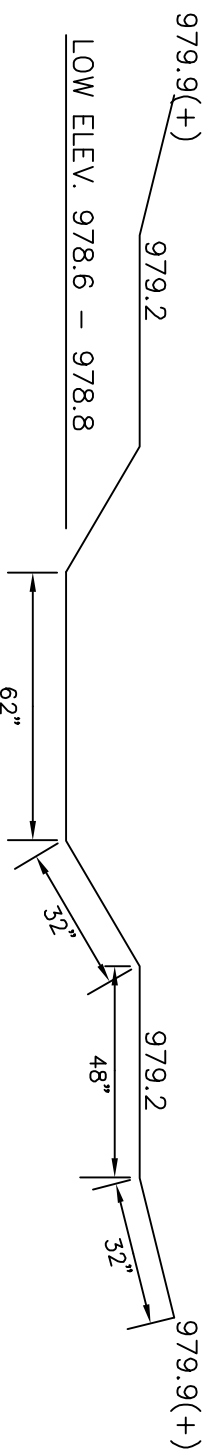
NOT TO SCALE



**PROFILE**

NOT TO SCALE

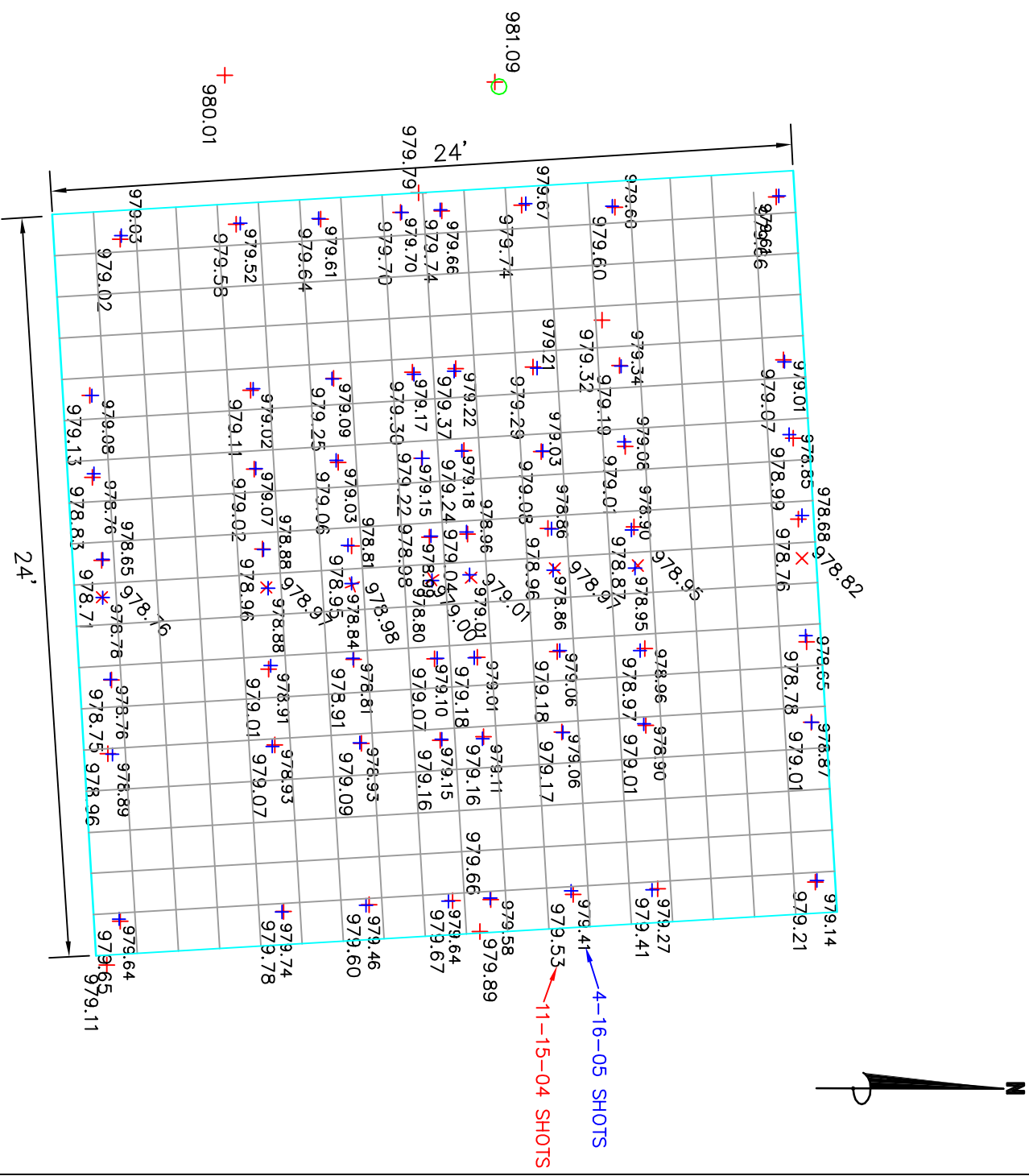
**DESIGN**



**CROSS-SECTION**

NOT TO SCALE

**DESIGN**



**AS-BUILT**

November 16, 2004

**PLAN VIEW**

NOT TO SCALE

NO.	DATE	REVISIONS	APPROVED	STATE PROJECT NO.	DRAWN BY PLU	DESIGNED BY	CHECKED BY	DATE	CITY OF GREENFIELD	FILE NO. 21051
									LAKE SARAH OUTLET AT ABANDONED RAILROAD EMBANKMENT LAKE SARA OUTLET CONTROL - CABLE CONCRETE	CABLE-CONC
										1
										1

SURVEYED AUGUST 9, 2004



**James R. Hill, Inc.**  
PLANNERS / ENGINEERS / SURVEYORS  
2500 E. CH. RD. 42, SUITE 100, SHARON, NH 03507  
PHONE: (603)890-0044 FAX: (603)890-0244